

exponent philanthropy

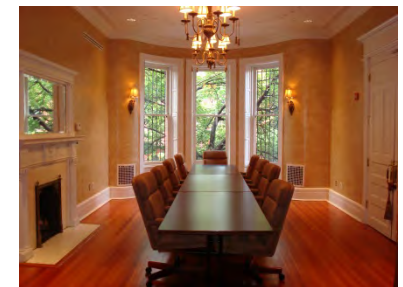
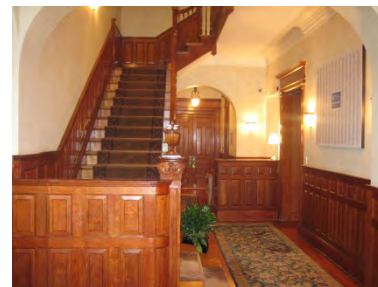
Exponent Philanthropy has office space available for lease at 1718 N Street NW, Washington, DC.

This unique space is divided between two floors and can be rented as a whole or as individual offices.

Amenities include:

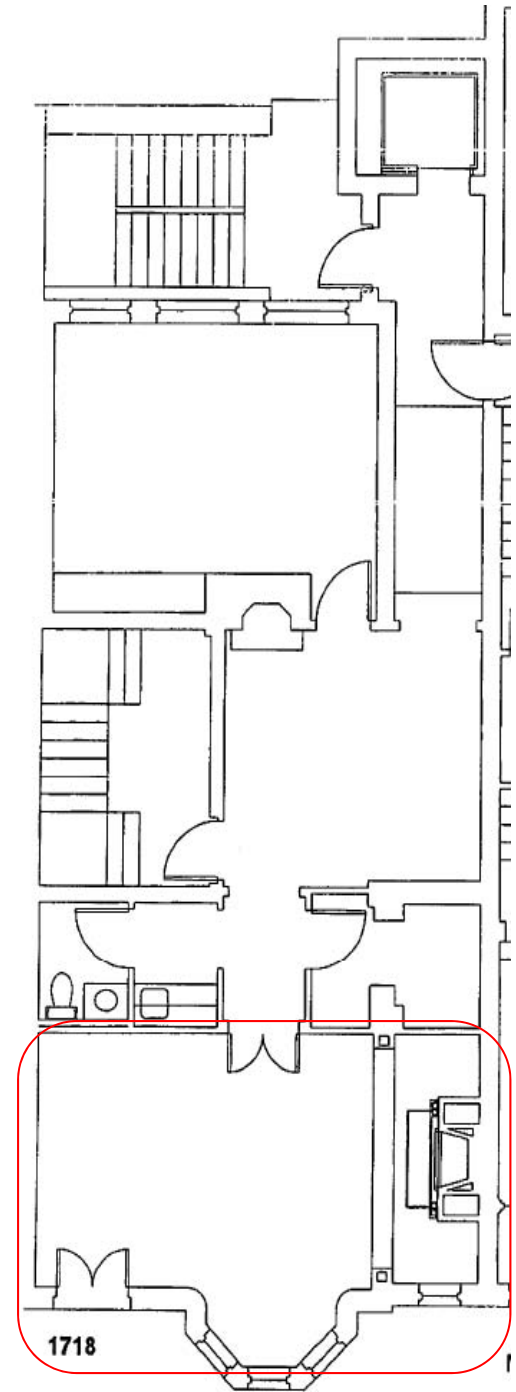
- Security system;
- Elevator;
- Private kitchen and bathroom on each floor;
- Utilities included;
- Reception services;
- Phone, Internet & Wi-Fi service;
- Two conference rooms

Contact: peter@exponentphilanthropy.org or 202-580-6560





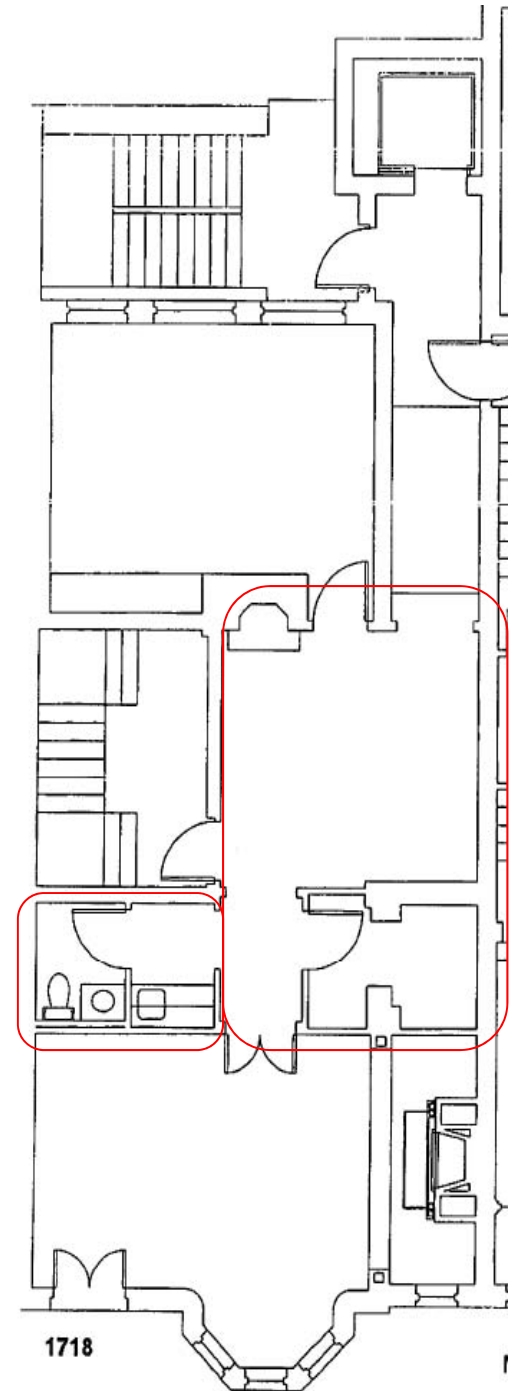
1718 N Street, NW
1st Floor
Large 325 sq. ft. executive office with fireplace and meeting area





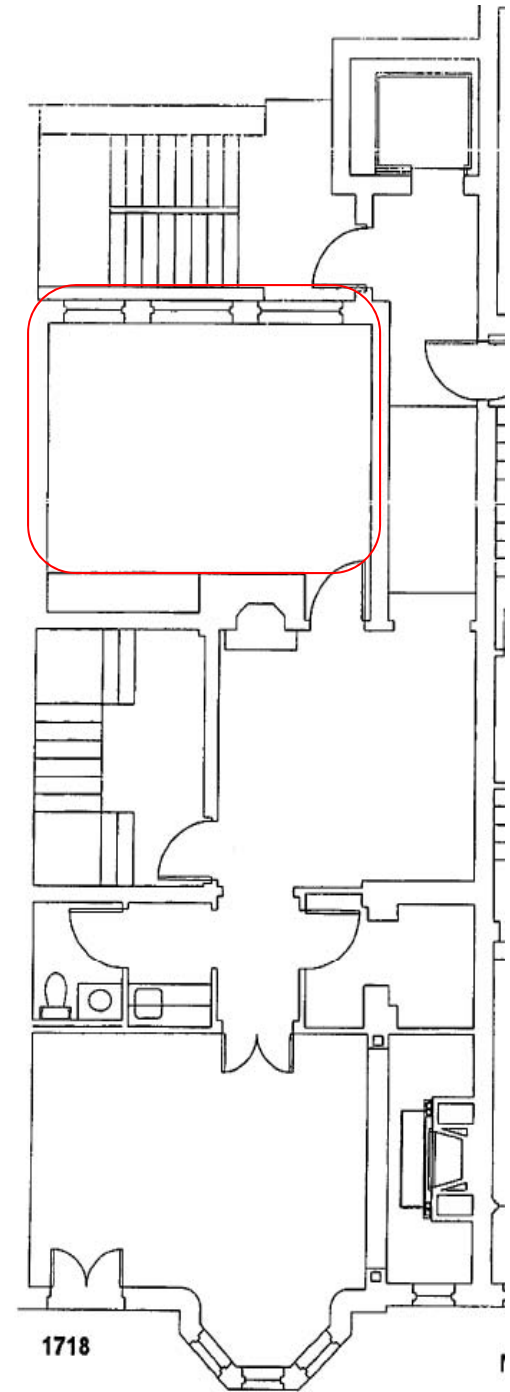
1718 N Street, NW
1st Floor

Receptionist / support staff office space of 182 sq. ft. adjacent to executive office. Custom built-in desk and library/storage cabinets. Additional storage area, private kitchen and bathroom.



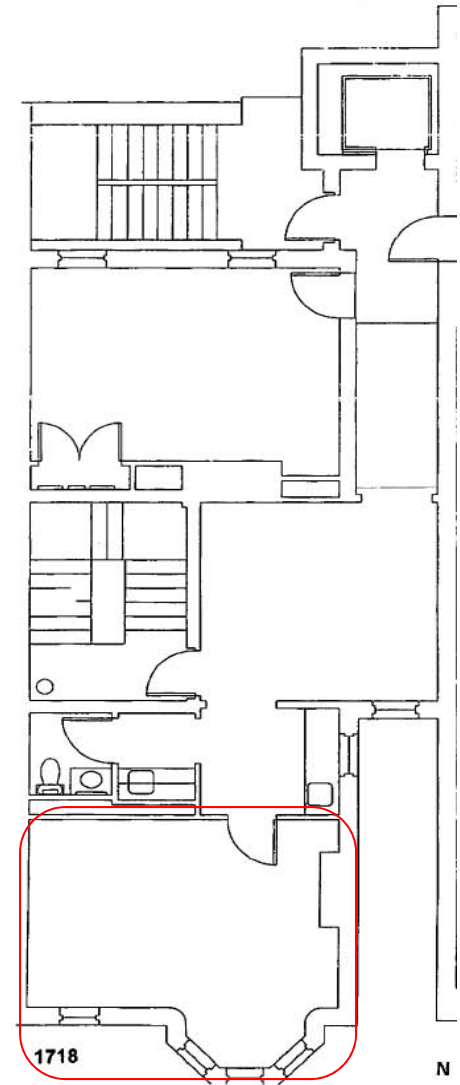


1718 N Street, NW
1st Floor
Office space or conference room of 231 sq. ft.
Custom built desks.





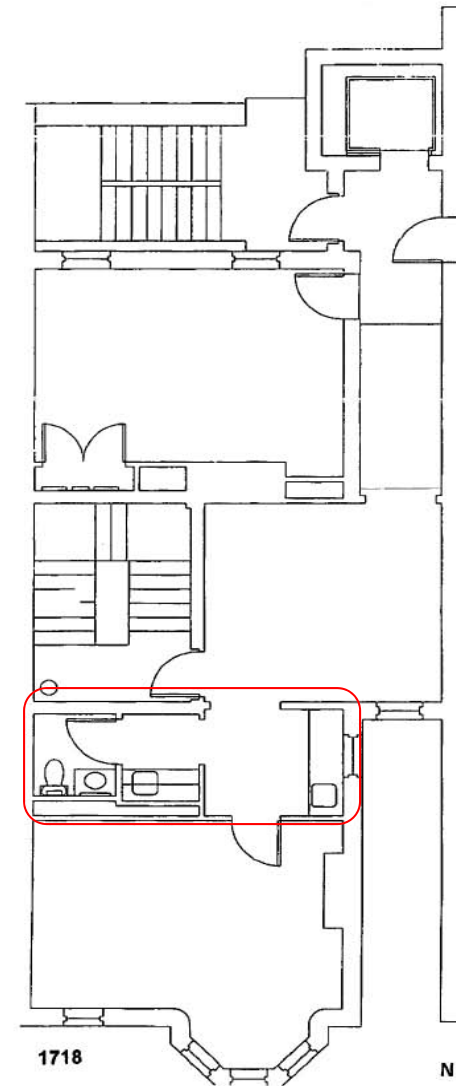
1718 N Street, NW
2nd Floor
Large 243 sq. ft. executive office





1718 N Street, NW
2nd Floor

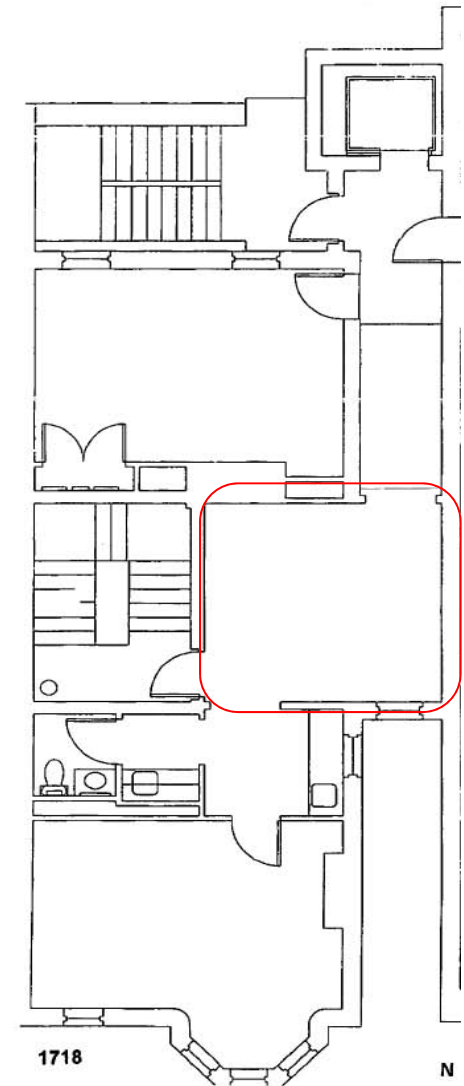
Receptionist / support staff space adjacent to executive office.
Private kitchen and bathroom.





1718 N Street, NW
2nd Floor

Receptionist / support staff open office space of 189 sq. ft.
adjacent to private kitchen and bathroom.





1718 N Street, NW
2nd Floor
Office space of 247 sq. ft.

