



# Corporate Partnership Opportunities

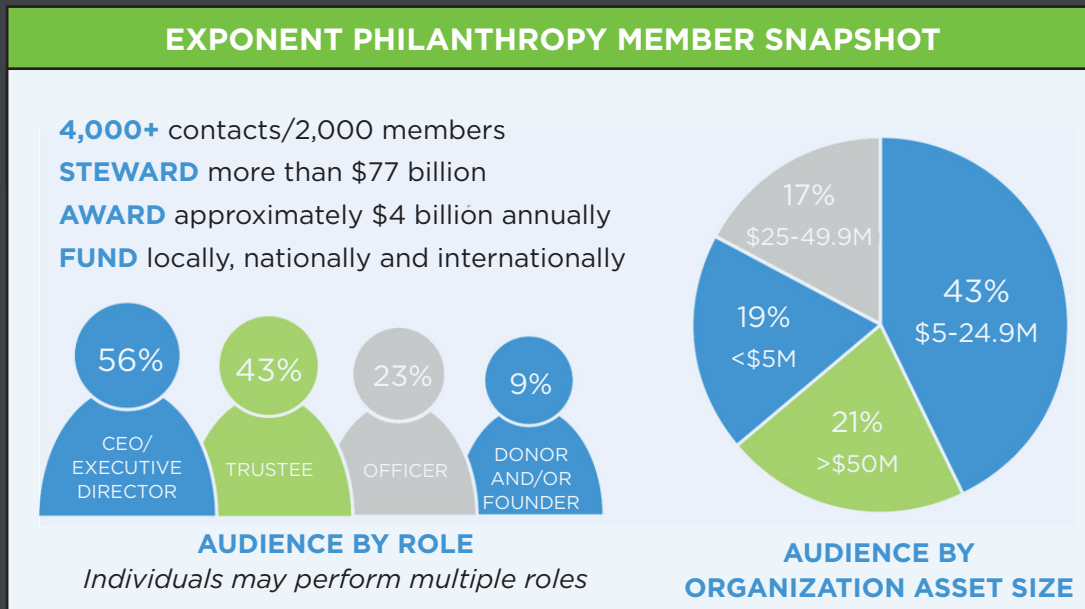
# Elevate Your Leadership Position by Supporting and Partnering with the Nation's Largest Philanthropic Association

Exponent Philanthropy is the **country's largest association of funders**. With more than 2,000 members, we are the only association dedicated to serving foundations with few or no staff, philanthropic families and individual donors.

Our vibrant network has in common lean operations and a style of philanthropy motivated by personal passion, community needs, and the strong desire for better outcomes. We provide high-quality and cost-effective programs, resources and connections that maximize our members' dollars and time for the benefit of diverse communities and causes.

“Our partnership with Exponent Philanthropy gives us the opportunity to stay current on industry information and trends while sharing our knowledge with a very engaged membership database.”

**Nina Cohen**  
**Director, Endowment and Foundation Advisory, Glenmede; Platinum Level Sustaining Partner**



# Partnership Opportunities

Our partnership opportunities offer a wide range of benefits and an unparalleled chance to showcase your expertise before the largest segment of the philanthropic community: **those who give with few or no staff.**

## MEMBERS BY USE OF CONSULTANTS

- ▶ 91% Pay for accounting services
- ▶ 87% Use financial advisors
- ▶ 50% Pay for legal services
- ▶ 34% Use consultants (other than accounting and legal)



# Sustaining Partnership Program

## A Partnership Level to Match Your Desired Impact

Support Exponent Philanthropy's mission while showcasing your brand and expertise in multiple ways throughout a two-year period. We strive to create customized mutually beneficial, and longstanding partnerships with key stakeholders in the philanthropic community.

### The Sustaining Partnership Program offers:

- Strong Relationships with various professionals who serve funders resulting in more business referrals
- Prominent placement in Exponent Philanthropy's faculty pool for events and educational programs
- Deeper relationships with Exponent Philanthropy's members and other philanthropic leaders
- Enhanced position as a the thought leader and expert in the philanthropic sector
- Customized benefits to meet your unique business goals.

#### FOUR LEVELS TO MATCH YOUR GOALS

Sustaining partnerships require a two-year commitment payable in two annual installments.

**PLATINUM SUSTAINING PARTNER**  
\$50,000/year

**GOLD SUSTAINING PARTNER**  
\$25,000/year

**SILVER SUSTAINING PARTNER**  
\$10,000/year

Benefits at this level and above may be customized based on business goals.

**PROFESSIONAL PARTNER**  
\$2,500/year

For firms with 5 or fewer principals or director-level equivalents (two-year commitments are rewarded with a 10% discount): or \$780/year for sole practitioners.



The excellent relationship we have with Exponent Philanthropy is the result of our matching values and a 'roll up your sleeves' attitude that focuses on client success. Their conference, workshops, learning materials, and focus on consistently helping their members get things done and make an impact. We regularly suggest Exponent Philanthropy to our clients as their go-to source when they are striving to do their philanthropy better."

**Daren Nordhagen,**  
**President & CEO,**  
**Foundant Technologies;**  
**Platinum Level Sustaining Partner**

# Exponent Philanthropy's Sustaining Partnership Program Benefits

	Platinum Level \$50,000 per year	Gold Level \$25,000 per year	Silver Level \$10,000 per year	Professional Partner \$2,500 per year
Guaranteed speaking opportunities (could be a combination of annual conference, local program or virtual event)	2 per each year of the agreement	1 per each year of the agreement	1 during term of the agreement	
Invitation to Chair's Reception at Annual Conference	✓			
Recognition as a Sustaining Partner at Annual Conference	✓	✓	✓	✓
Complimentary Registrations to Annual Conference	5	3	2	
Invitation to present to Board of Directors	✓			
Invitation to Exponent Philanthropy's Board Reception/Dinner	Once per year			
Recognition on Exponent Philanthropy's partner page	✓ With hyperlink to website	✓ With hyperlink to website	✓ With hyperlink to website	✓
Positioned as a resource through Exponent Philanthropy's Q&A Service	✓	✓	✓	✓
Recognition in Exponent Philanthropy e-mail communications to members & contacts	✓	✓		
Opportunity to contribute content and share thought leadership on Exponent Philanthropy's blog	2 per each year of the agreement	1 per each year of the agreement	1 during term of the agreement	
Recognition of support in flagship publication (Foundation Operations & Management Report) circulated to members & contacts	✓	✓	✓	✓
Option to receive complimentary copies of the Foundation Operations & Management Report	15	10	5	
Online access to member-only content to better serve your clients. (does not include access to Member Directory)	✓	✓	✓	✓
Recognition in Exponent Philanthropy's publication, Essentials	✓	✓	✓	✓
Partnership announcement via social media channels	✓	✓	✓	✓
Opportunity to offer non-member clients \$100 off their first year of Exponent Philanthropy membership	✓	✓	✓	✓
Listing in Exponent Philanthropy's online Directory of Foundation and Philanthropy Advisors	✓	✓	✓	✓

## LET'S WORK TOGETHER

We look forward to working with you and welcome the opportunity to be creative and customize opportunities that advance your business goals while offering value to our members.

For more information contact:

**LaShonne Barnes**

Director of Development

Lashonne@exponentphilanthropy.org

202.580.6560