



# Corporate Partnership Opportunities

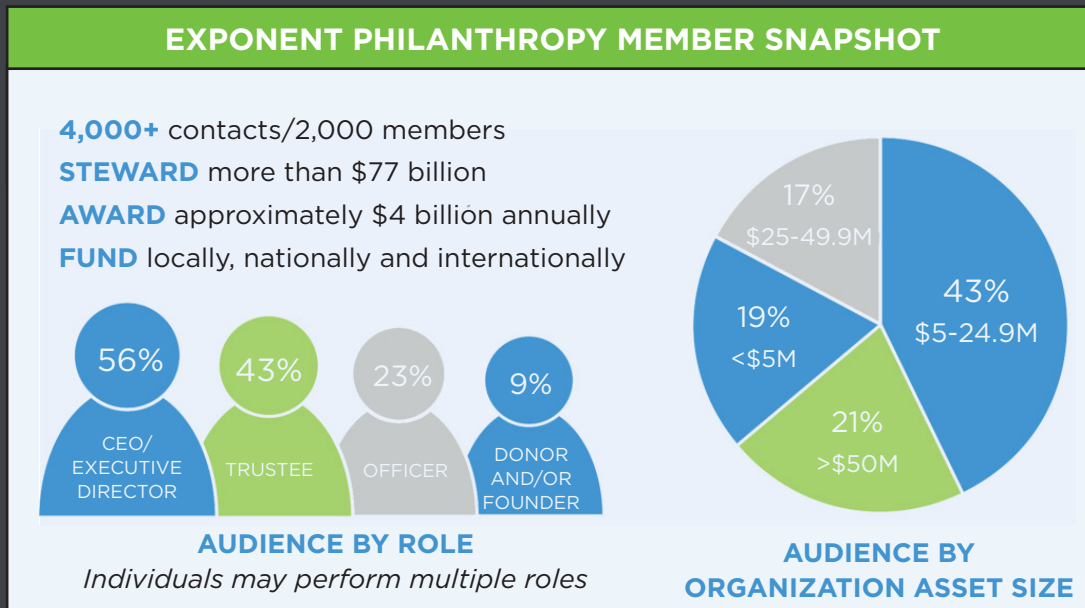
# Elevate Your Leadership Position by Supporting and Partnering with the Nation's Largest Philanthropic Association

Exponent Philanthropy is the **country's largest association of funders**. With more than 2,000 members, we are the only association dedicated to serving foundations with few or no staff, philanthropic families and individual donors.

Our vibrant network has in common lean operations and a style of philanthropy motivated by personal passion, community needs, and the strong desire for better outcomes. We provide high-quality and cost-effective programs, resources and connections that maximize our members' dollars and time for the benefit of diverse communities and causes.

“Our partnership with Exponent Philanthropy gives us the opportunity to stay current on industry information and trends while sharing our knowledge with a very engaged membership database.”

**Nina Cohen**  
Director, Endowment and Foundation Advisory,  
Glenmede;  
Platinum Level Sustaining Partner



## Partnership Opportunities

Our partnership opportunities offer a wide range of benefits and an unparalleled chance to showcase your expertise before the largest segment of the philanthropic community: **those who give with few or no staff.**

### MEMBERS BY USE OF CONSULTANTS

- ▶ 91% Pay for accounting services
- ▶ 87% Use financial advisors
- ▶ 50% Pay for legal services
- ▶ 34% Use consultants (other than accounting and legal)



# Sustaining Partnership Program

## A Partnership Level to Match Your Desired Impact

Support Exponent Philanthropy's mission while showcasing your brand and expertise in multiple ways throughout a two-year period. We strive to **create customized mutually beneficial, and longstanding partnerships with key stakeholders in the philanthropic community.**

### The Sustaining Partnership Program offers:

- Strong Relationships with various professionals who serve funders resulting in more business referrals
- Prominent placement in Exponent Philanthropy's faculty pool for events and educational programs
- Deeper relationships with Exponent Philanthropy's members and other philanthropic leaders
- Enhanced position as a the thought leader and expert in the philanthropic sector
- Customized benefits to meet your unique business goals.

#### DIFFERENT LEVELS TO REACH YOUR GOALS

Sustaining partnerships require a two-year commitment payable in two annual installments.

#### **PLATINUM SUSTAINING PARTNER**

**\$50,000/year**

#### **GOLD SUSTAINING PARTNER**

**\$25,000/year**

#### **SILVER SUSTAINING PARTNER**

**\$10,000/year**

Benefits at this level and above may be customized based on business goals.

#### **PROVISIONAL PARTNER**

**\$5,000/year**

**An Introduction to the Sustaining Partnership Program!** Take advantage of the opportunity to experience a preview of program benefits for one year only. After the one year experience, companies are encouraged to commit to the program at a higher level for continuation of benefits and deeper engagement.

#### **PROFESSIONAL PARTNER**

**\$2,500/year**

For firms with 5 or fewer principals or director-level equivalents (two-year commitments are rewarded with a 10% discount): or \$780/year for sole practitioners.



# Exponent Philanthropy's Sustaining Partnership Program Benefits

Benefits	Platinum Level	Gold Level	Silver Level	Provisional Partner Level	Professional Partner
<b>THOUGHT LEADERSHIP &amp; VIRTUAL LEARNING</b>					
Guaranteed speaking engagements	4	2	1	1	Contingent upon programming needs, demand and timing.
Firm representatives added to Faculty Pool and be given priority consideration for additional speaking opportunities that arise during term of agreement (these are not guaranteed and dependent upon programming, demand from members & composition of faculty pool)	X	X	X	X	X
Access to contribute content to Exponent Philanthropy's blog	X	X	X	X	X
Access to share links to articles and other thought leadership pieces in Exponent Philanthropy's corporate partner electronic newsletter	X	X	X	X	
<b>MEMBER ENGAGEMENT &amp; NETWORKING</b>					
Online access to member-only content (does not include access to the member directory) for internal educational purposes	X	X	X	3-months	X
Firm representative(s) added to the Directory of Advisors	X	X	X	X	X
Exponent Philanthropy staff will refer to company as a resource when working with members who call into Exponent Philanthropy's Q&A service	X	X	X	X	X
Extend non-Exponent Philanthropy member clients a \$100 discount in the initial year of a new Exponent Philanthropy Signature membership. Applicants must meet Exponent Philanthropy membership criteria.	X	X	X	X	X
<b>GENERAL BRAND RECOGNITION</b>					
Partner Recognition in/on the following:					
Remo -Exponent Philanthropy's virtual platform, during all events	X	X	X	X	X
Weekly eblast to members	X	X	X	X	X
Corporate partner page	X	X	X	X	X
Electronic corporate partner newsletter	X	X	X	X	X
<i>Essentials</i> , Exponent Philanthropy's quarterly publication	X	X	X	X	X
Foundation Operations & Management Report	X	X	X	X	X
Advertising in Foundation Operations & Management Report	Full-Page	Half-Page	Half-Page	Half-Page Black and White	
<b>ANNUAL CONFERENCE</b> (Packages are customized at the Platinum, Gold & Silver levels and includes the benefits below)					
Video placement on conference website	2-minutes	1-minute	1-minute		
Access to host Dine Arouds to connect with attendees, which marketing support from Exponent Philanthropy	X	X	X		
Access to one exhibit booth	X	X	X		
Recognition on conference website	X	X	X		
Complimentary full conference registrations	3	2	2		

## LET'S WORK TOGETHER

We look forward to working with you and welcome the opportunity to be creative and customize opportunities that advance your business goals while offering value to our members.

For more information contact:

**Akeembra Lawrence**

Manager, Corporate and Foundation  
Relations [Akeembra@exponentphilanthropy.org](mailto:Akeembra@exponentphilanthropy.org)  
202.580.6560