

A photograph of an event booth for Exponent Philanthropy. Two men are in the foreground, looking at a brochure. The man on the right is pointing at a specific section of the brochure. They are both wearing green lanyards with 'Exponent Philanthropy' printed on them. In the background, other attendees and a woman are visible near a table covered with a white cloth, which also has brochures on it. The setting is a modern building with large windows and a high ceiling.

exponent
philanthropy

Corporate Partnership OPPORTUNITIES

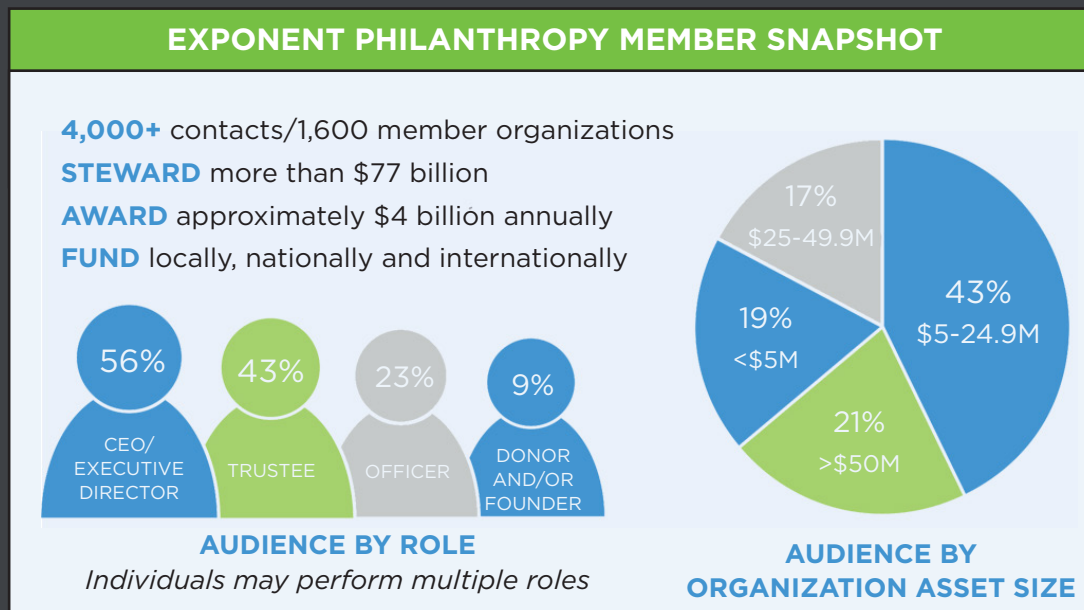
Elevate Your Leadership Position by Supporting and Partnering with the Nation's Largest Philanthropic Association

Exponent Philanthropy is the **country's largest association of funders**. With nearly 1,600 members, we are the only association dedicated to serving foundations with few or no staff, philanthropic families and individual donors.

Our vibrant network has in common lean operations and a style of philanthropy motivated by personal passion, community needs, and the strong desire for better outcomes. We provide high-quality and cost-effective programs, resources and connections that maximize our members' dollars and time for the benefit of diverse communities and causes.

“Our partnership with Exponent Philanthropy gives us the opportunity to stay current on industry information and trends while sharing our knowledge with a very engaged membership database.”

Nina Cohen
Glenmede
Platinum Level
Sustaining Partner



Partnership Opportunities

Our partnership opportunities offer a wide range of benefits and an unparalleled chance to showcase your expertise before the largest segment of the philanthropic community: **those who give with few or no staff.**

MEMBERS BY USE OF CONSULTANTS

86% of members use a consultant for services related to their operations

- ▶ 84% Pay for tax preparation help
- ▶ 58% Pay for investment services
- ▶ 53% Engage legal consultants
- ▶ 46% Pay for bookkeeping
- ▶ 44% Pay for audit services



Sustaining Partnership Program

Support Exponent Philanthropy's mission while showcasing your brand and expertise in multiple ways throughout a two-year period. We strive to **create customized mutually beneficial, and long-standing partnerships with key stakeholders in the philanthropic community.**

The Sustaining Partnership Program offers:

- Strong Relationships with various professionals who serve funders resulting in more business referrals
- Inclusion in Exponent Philanthropy's Directory of Advisors which our members refer to for needed services.
- Deeper relationships with Exponent Philanthropy members and other philanthropic leaders
- Enhanced position as a thought leader and expert in the philanthropic sector
- Customized benefits to meet your unique business goals.

DIFFERENT LEVELS TO REACH YOUR GOALS

Sustaining partnerships require a two-year commitment payable in two annual installments.

PLATINUM SUSTAINING PARTNER

\$50,000/year

GOLD SUSTAINING PARTNER

\$25,000/year

SILVER SUSTAINING PARTNER

\$12,000/year

Benefits at this level and above may be customized based on business goals.

PROFESSIONAL PARTNER

\$2,750/year



The excellent relationship we have with Exponent Philanthropy is the result of our matching values and a 'roll up your sleeves' attitude that focuses on client success. Their conference, workshops, learning materials, and focus on consistently helping their members get things done and make an impact. We regularly suggest Exponent Philanthropy to our clients as their go-to source when they are striving to do their philanthropy better."

**Daren Nordhagen,
Foundant Technologies;
Sustaining Partner**

Sustaining Partnership Program Benefits Overview

	Platinum \$50,000	Gold \$25,000	Silver \$12,000	Professional Partner \$2,750
THOUGHT LEADERSHIP & VIRTUAL LEARNING				
Guaranteed speaking engagements	6 <i>over a two-year period</i>	3 <i>over a two-year period</i>	1 <i>over a two-year period</i>	
Access to contribute content to Exponent Philanthropy's blog	✓	✓	✓	✓
Access to share links to articles and other thought leadership pieces over Exponent Philanthropy's social media feeds	✓	✓	✓	✓
MEMBER ENGAGEMENT & NETWORKING				
Online access to member-only content (does not include access to the member directory) for internal educational purposes	✓	✓	✓	✓
Firm representative(s) added to the Directory of Advisors	✓	✓	✓	✓
Exponent Philanthropy staff will refer to company as a resource when working with members who call into Exponent Philanthropy's Q&A service	✓	✓	✓	✓
Extend non-Exponent Philanthropy member clients a \$100 discount in the initial year of a new Exponent Philanthropy Signature membership. Applicants must meet Exponent Philanthropy membership criteria	✓	✓	✓	✓
GENERAL BRAND RECOGNITION				
Partner Recognition in/on the following:				
Member Newsletter	✓	✓	✓	✓
Social Media channels	✓	✓	✓	✓
Corporate partner webpage	✓	✓	✓	✓
Foundation Operations & Management Report	✓	✓	✓	
Advertising in Foundation Operations & Management Report	Full-Page	Half-Page	Half-Page	
ANNUAL CONFERENCE				
(Packages are customized at the Platinum, Gold & Silver levels and include the benefits below)				
Recognition on conference mobile app w/banner ad	✓	✓	✓	
Access to host Dine Arounds to connect with attendees, with marketing support from Exponent Philanthropy	✓	✓	✓	
Access to one exhibit booth	2	✓	✓	25% discount
Recognition on conference website	✓	✓	✓	
Complimentary full conference registrations	3	2	2	
Social media promotion, including a dedicated "thank you" post and a post sharing a 2-minute video	✓	✓	✓	

LET'S WORK TOGETHER

We look forward to working with you and welcome the opportunity to be creative and customize opportunities that advance your business goals while offering value to our members.

For more information contact:

Darah Moore

Corporate Relations Manager
darah@exponentphilanthropy.org
202.580.6560